

**A New Subspecies of *Platycerus delicatulus* LEWIS
(Lucanidae) from Shimabara Peninsula**

By Hiroshi FUJITA* and Toshiyuki ICHIKAWA**

* Taito 2-29-6, Taito-ku, Tokyo City 110

** Oji 5-2-1-1104, Kita-ku, Tokyo City 114

島原半島におけるルリクワガタの1新亜種

藤田 宏・市川 敏之

As the result of the examinations about local variations of *Platycerus delicatulus* LEWIS in Japan, the authors recently noticed that specimens from Mt. Unzendake, Shimabara Peninsula in Nagasaki Prefecture are different from those of other districts, and describe it as a new subspecies.

The authors must express our warmest thanks to Mr. Shôichi IMASAKA for his valuable assistance in the course of this study.

***Platycerus delicatulus unzendakensis* subsp. nov.**

Platycerus delicatulus: AMANO, 1967, Koganemushi-seinenbusi, **1**(2): 1.

_____ : SATA, 1970, Koganemushi, **9**(1):25.

_____ : EJIMA & NODA, 1971, Koganemushi, **10**(1):42.

_____ : IMASAKA & OCHI, 1979, Kitakyushu-no-kontyu, **26**(1):12, pl. 2, fig. 3.

This new subspecies differs from the nominate form in the following points: 1) punctures on elytra hardly confluent; 2) elytra shorter and more suddenly narrowed to apical half posteriorly; 3) body above with remarkable midnight-blue tint in male (greenish blue in the nominate form); 4) body above bronzy with slightly greenish tint in female (blue, black or bronze in the nominate form).

The habitat of this new form is only Mt. Unzendake, Shimabara Peninsula and *Platycerus delicatulus* from any other regions in Kyushu are contained in the *Platycerus delicatulus delicatulus* LEWIS.

Length. Male, 10.0-13.5 mm (incl. mandibles), 9.0-11.5 mm (excl. mandibles)

Female, 9.5-12.0 mm (incl. mandibles), 9.0-11.0 mm (excl. mandibles)

Width. Male, 3.5-4.0 mm, female, 3.5-4.0 mm

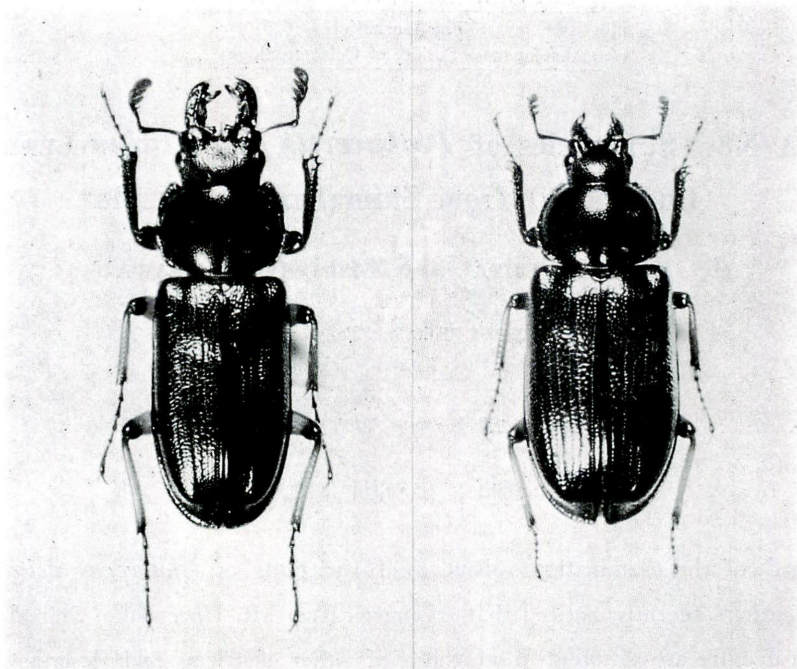


Fig. 1 *Platycerus delicatulus unzendakensis* subsp. nov.
(left: male, holotype; right: female, allotype)

Habitat. Mt. Unzendake (Shimabara Peninsula in Kyushu)

Type-series. Holotype, ♂, Mt. Unzendake Nagasaki Pref. (1100-1200 m in altitude), 8. IV. 1982, H. FUJITA leg. (deposited in the National Science Museum of Tokyo); allotype, ♀, same locality as the holotype, 8. IV. 1982, H. FUJITA leg. (deposited in the National Science Museum of Tokyo); paratypes, same locality as the holotype, 1♂, 15. VI. 1976, S. IMASAKA leg.; 2♂♂, 6. VI. 1977, S. IMASAKA leg.; 1♂2♀♀, 1. III. 1977, S. IMASAKA leg.; 1♀, 1. IV. 1979, S. IMASAKA leg.; 1♂, 6. VI. 1979, S. IMASAKA leg.; 3♂♂, 27. V. 1980, S. IMASAKA leg.; 2♂♂, 10. VI. 1981, S. IMASAKA leg.; 2♂♂1♀, 21. IV. 1981, S. IMASAKA leg.; 4♂♂3♀♀, 7. IV. 1982, H. FUJITA & S. IMASAKA leg.; 15♂♂24♀♀, 8. IV. 1982, H. FUJITA leg.; 21♂♂21♀♀, 10. IV. 1982, H. FUJITA leg.; 30♂♂24♀♀, 11. IV. 1982, H. FUJITA leg.

摘 要

ルリクワガタ *Platycerus delicatulus* LEWIS の地域変異を調べた結果、長崎県島原半島雲仙岳には特異な形質を持った個体群が分布していることが判明したので、これを新亜種 *unzendakensis* subsp. nov. として記載した。この亜種は原名亜種に比べ、上翅の点刻があまり融合しないこと、上翅が短く中央より後半で急にせばまること、雄では体の上面が深い青色の光沢を帯び（原名亜種は緑がかった青色）、雌ではかすかに緑がかった銅色のみ（原名亜種は青色、黒色、銅色の3色のうちいずれか）であるなどの点で区別できる。

Unzendakensis subsp. nov. の分布域は、現在のところ島原半島の雲仙岳に限られており、筆者らの検した九州の他地域のルリクワガタは原名亜種 *Platycerus delicatulus delicatulus* LEWIS に含まれるものであった。